

ROHS

REV.	ECN NO	DESCRIPTION	REVISED	DATE
A		新订图面	KEVIN	2015.03.10

Specifications / 技术规格:

Current Rating: 3A
额定电流: 3A

Insulation Resistance: 1000MΩ Min.
绝缘电阻: 最小1000MΩ

Dielectric Withstanding: 1000V AC
耐电压: 1000V AC

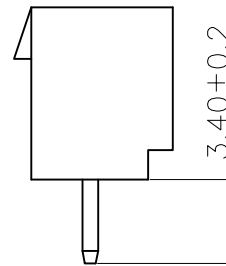
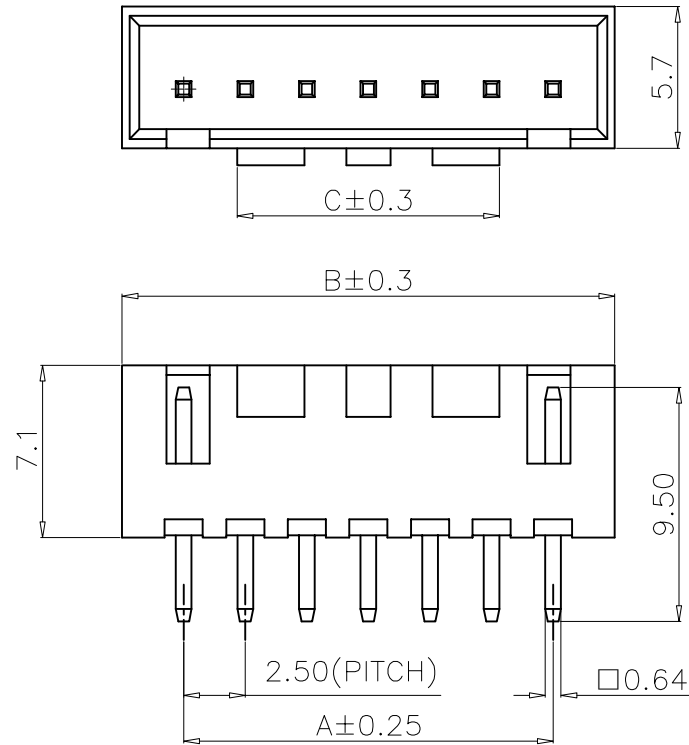
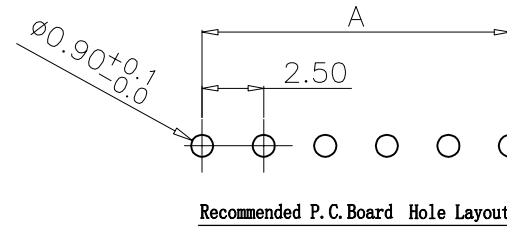
Contact Resistance: 20 mΩ Max.
接触电阻: 最大20mΩ

Operating Temperature: -25°C to +85°C
工作温度: -25°C 到 85°C

Materials / 材料:

Contact Material: Brass (Tin plating)
接触端子材料: 黄铜 (镀锡)

Insulation Material: PA or PBT UL94V-2 Natural
绝缘体塑胶材质: PA 或 PBT UL94V-2 本色



PIN数	A	B	C
2	2.50	7.50	1.70
3	5.00	10.00	2.50
4	7.50	12.50	5.00
5	10.00	15.00	5.60
6	12.50	17.50	8.10
7	15.00	20.00	10.60
8	17.50	22.50	11.70
9	20.00	25.00	
10	22.50	27.50	
11	25.00	30.00	
12	27.50	32.50	
13	30.00	35.00	
14	32.50	37.50	
15	35.00	40.00	
16	37.50	42.50	

浙江快利电子有限公司
Zhejiang Kuaili Electronic Co., Ltd

GENERAL TOLERANCE

X° ± 3°	X. --
.X° ± 2°	.X ± 0.30
.XX° ± 1°	.XX ± 0.20
.XXX° ± 0.5°	.XXX --

DESIGN: KEVIN

DATE: 2015-03-10

DWG. NO.

TITLE.

CHECKED:

DATE:

AUDITED:

DATE:

APPROVED:

DATE:

PART NO.

KL-XHB-NA

XHB-NA 连接器

REV.	UNIT.	SCALE.	UNIT.	SCALE.	UNIT.
A	MM	1:1	MM	1:1	MM