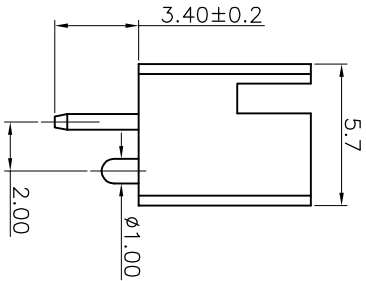
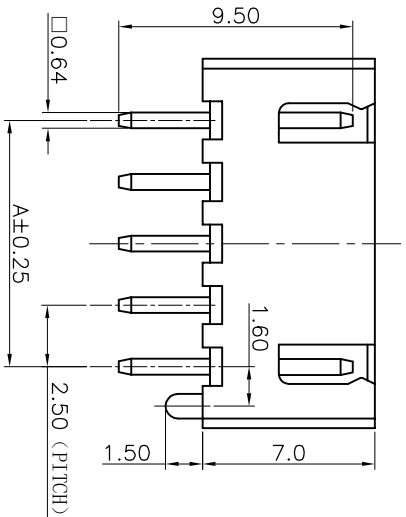
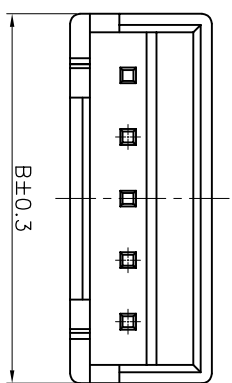
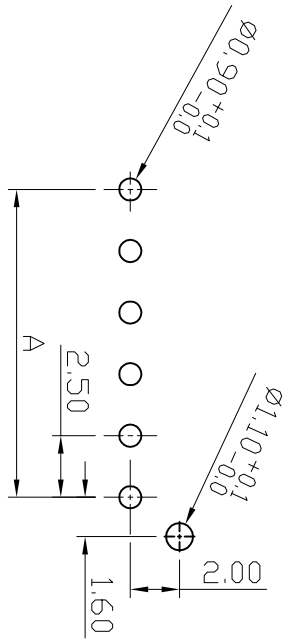


REV.	ECN NO	DESCRIPTION	REVISED	DATE
A		新订图面	KEVIN	

ROHS



PIN数	K± (mm)	
	A	B
2	2.5	7.5
3	5.0	10.0
4	7.5	12.5
5	10.0	15.0
6	12.5	17.5
7	15.0	20.0
8	17.5	22.5
9	20.0	25.0
10	22.5	27.5
11	25.0	30.0
12	27.5	32.5
13	30.0	35.0
14	32.5	37.5
15	35.0	40.0
16	37.5	42.5



Recommended P.C.Board Hole Layout

Specifications / 技术规格:

Current rating: 3A
 额定电流: 3A
 Voltage rating: 250V AC, DC
 额定电压: 250V AC, DC
 Insulation Resistance: 1000MΩ Min.
 绝缘电阻: 最小1000MΩ
 Withstanding voltage: 1000V AC 1Min
 耐电压: 1000V AC 1分钟
 Contact Resistance: 20mΩ Max.
 接触电阻: 最大20mΩ
 Operating Temperature: -25°C to +85°C
 工作温度: -25°C 到85°C

Materials / 材料:
 Contact Material: Brass(Tin plating)
 接触端子材料: 黄铜(镀锡)
 Insulation Material: PA or PBT UL94V-2 Natural
 绝缘体塑胶材质: PA 或 PBT UL94V-2 本色

浙江快利电子有限公司
 Zhejiang Kuaili Electronic Co., Ltd

GENERAL TOLERANCE		DESIGN:	KEVIN
X. ± 3'	X. ±0.35	CHECKED:	
X. ± 2'	X. ±0.25	AUDITED:	
.XX ± 1'	.XX ±0.15	APPROVED:	
.XXX ± 0.5'	.XXX ±0.10	DATE:	2015.03.10

DWG. NO.		TITLE:	XH-NAD
PART NO.	KL-XH-NAD		

A

1

2

3

4

5

6

7

8

9

A

1

2

3

4

5

6

7

8

9

A

B

C

D

E

F