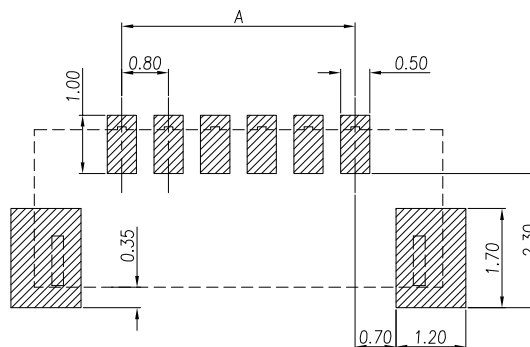
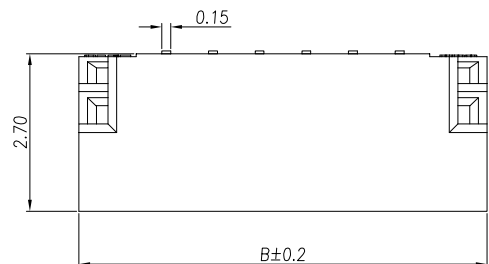
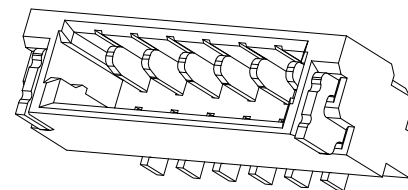
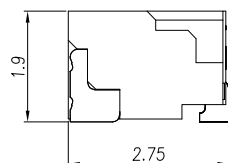
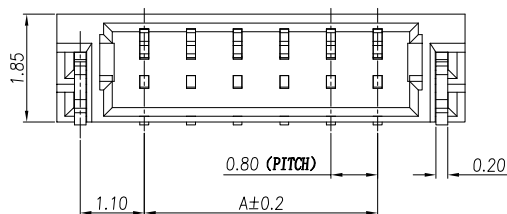


REV.	ECN NO	DESCRIPTION	REVISED	DATE
A		新订图面	HELLER	2023.05.19

CKT.	A	B
2	0.80	3.80
3	1.60	4.60
4	2.40	5.40
5	3.20	6.20
6	4.00	7.00
7	4.80	7.80
8	5.60	8.60
9	6.40	9.40
10	7.20	10.20
11	8.00	11.00
12	8.80	11.80
13	9.60	12.60
14	10.40	13.40
15	11.20	14.20
16	12.00	15.00
17	12.80	15.80
18	13.60	16.60
19	14.40	17.40
20	15.20	18.20



RECOMMENDED P.C.BOARD LAYOUT(TOP VIEW)  
GENERAL TOLERANCE : ±0.05



规格:

- 材料:  
胶芯材料: PA或PBT或LCP UL94V-0 黑色.  
焊片材料: 铜, 镀镍&锡.  
插针材料: 铜, 镀镍&锡.
- 额定电压: 30V AC.
- 额定电流: 1.0A.
- 接触电阻: 初始小于等于30mΩ; 最大50mΩ (试验后量测)
- 绝缘电阻: 100MΩ.
- 耐压: 200V/1分钟.
- 操作温度: -25°C~85°C.

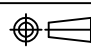
 浙江快利电子有限公司  
ZheJiang Kuaili Electronic Co., LTD.

GENERAL TOLERANCE	
X° ± 3'	X. --
.X° ± 2'	.X ±0.30
.XX° ± 1'	.XX ±0.20
.XXX° ± 0.5'	.XXX --

DESIGN:	张国旭	DATE:	2023.05.19
CHECKED:	朱继衡	DATE:	2023.05.19
APPROVED:	王子林	DATE:	2023.05.19

DWG. NO.	
PART NO.	KL-SUH-NAWT

TITLE.	SUH-NAWT
--------	----------

REV.	UNIT.	SCALE.	
A	MM	-	