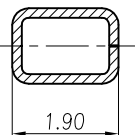
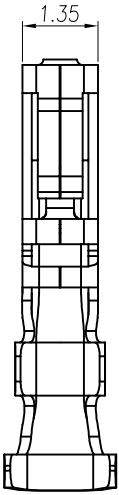
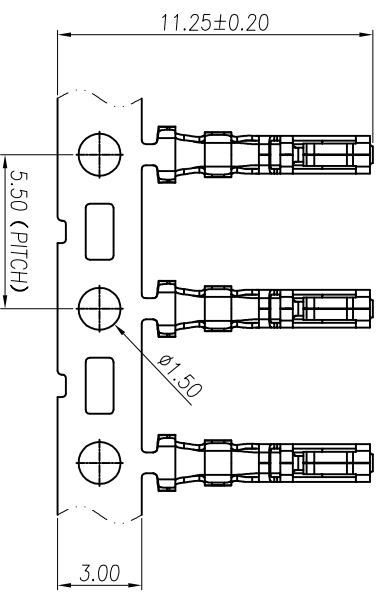


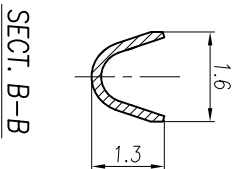
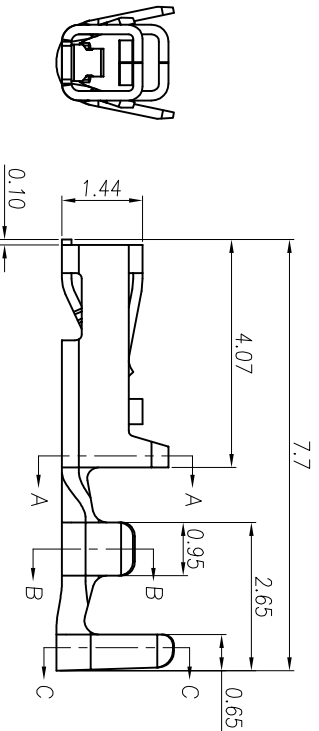
REV.	ECN NO	DESCRIPTION	REVISED	DATE
A		新版发行	HELLER	18.11.19



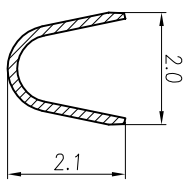
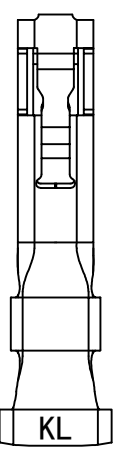
SECT. A-A



排样图  
SCALE 0.5:1



SECT. B-B



SECT. C-C

Specifications / 技术规格:  
 Current Rating: 3A  
 额定电流: 3A  
 Voltage rating: 250V AC, DC  
 额定电压: 250V AC, DC  
 Insulation Resistance: 1000 M Ωmin.  
 绝缘电阻: 最小1000MΩ  
 Dielectric Withstanding: 800V AC  
 耐压: 800V AC  
 Contact Resistance: 20m Max.  
 接触电阻: 最大20mΩ  
 Operating Temperature: -25°C to +85°C  
 工作温度: -25°C 到 85°C

Materials / 材料:  
 Contact Material: Phosphor Bronze(Tin plated)  
 接触端子材料: 磷铜(镀锡)

**浙江快利电子有限公司**  
 Zhejiang Kuaile Electronic Co., Ltd

GENERAL TOLERANCE	
X° ± 3°	.XXX: ±0.10
X° ± 2°	.XX: ±0.15
.XX° ± 1°	.X: ±0.25
.XXX° ± 0.5°	X: ±0.35

DESIGN:	HELLER	DATE:	18.11.19
AUDITED:	朱建慧	DATE:	18.11.19
APPROVED:	朱建华	DATE:	18.11.19

DWG. NO.	
PART NO.	

**TITLE:**  
 2.0间距双排侧带扣端子  
 SMH-TE

REV.	UNIT	SCALE
A	MM	---

1 2 3 4 5 6 7 8 9

A

B

C

D

E

F

A

B

C

D

E

F