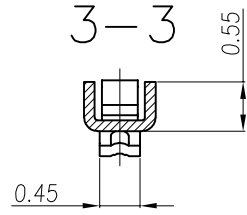
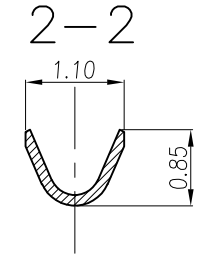
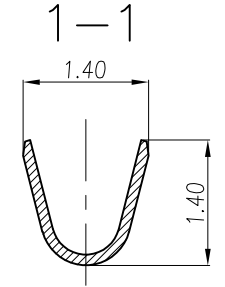
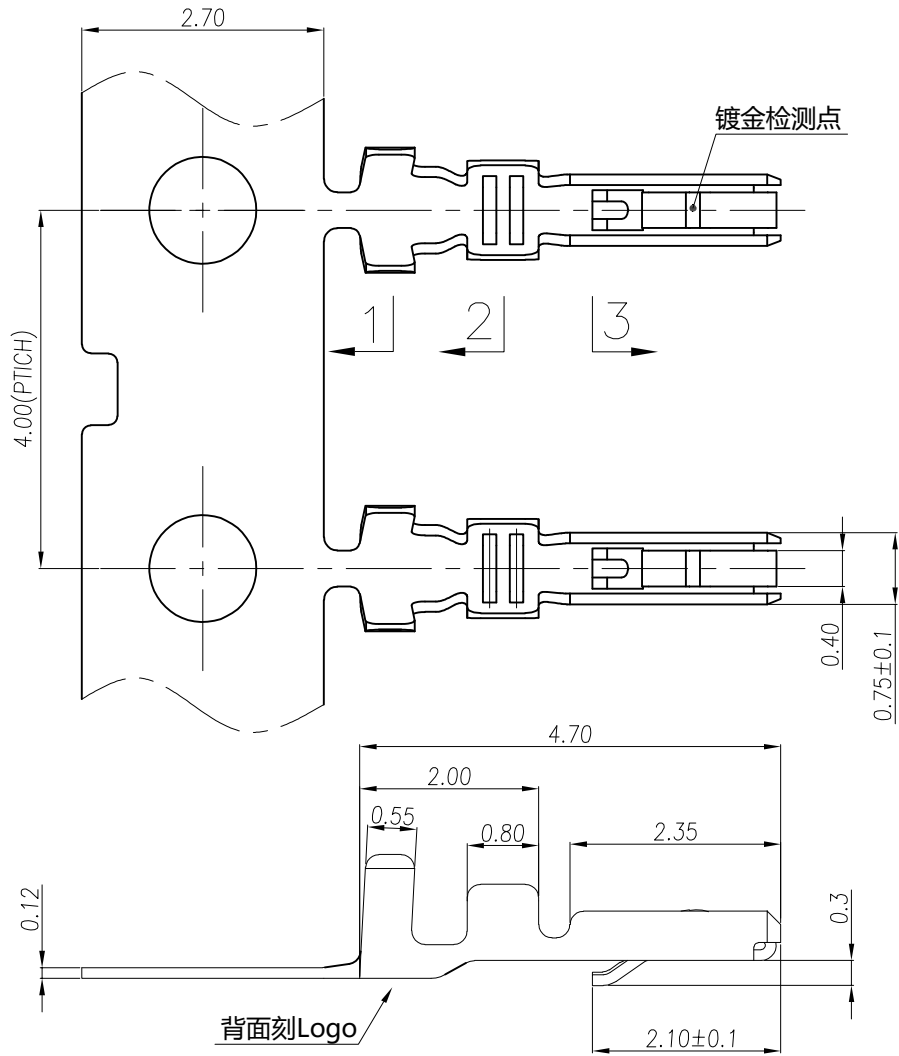


REV.	ECN NO	DESCRIPTION	REVISED	DATE
A		新订图面	徐民建	2023.05.15



Specifications /技术规格:

Current Rating: 1A  
额定电流: 1A

Insulation Resistance: 500MΩ Min.  
绝缘电阻: 最小500MΩ

Dielectric Withstanding: 500V AC  
耐电压: 500V AC

Contact Resistance: 20mΩ Max.  
接触电阻: 最大20mΩ

Operating Temperature: -25°C to +85°C  
工作温度: -25°C 到 85°C

Applicable wire: Conductor size/ AWG #32 to #28  
Insulation O.D./ 0.4 to 0.8 mm

适用导线: 规格32AWG-28AWG, 导线外径0.4~0.8mm

Materials /材料:

Contact Material: Phosphor Bronze( Gold plated)  
接触端子材料: 磷铜(镀金)

 浙江快利电子有限公司  
ZheJiang KuaiLi Electronic Co., LTD.

GENERAL TOLERANCE	
X.: ±3°	X.: ±0.35
.X: ±2°	X.X: ±0.25
.XX: ±1°	X.XX: ±0.15
.XXX: ±0.5°	X.XXX: ±0.10

DESIGN:	徐民建	DATE:	2023.05.15
CHECKED:	王子林	DATE:	2023.05.15
APPROVED:	朱建华	DATE:	2023.05.15

DWG. NO.	
PART NO.	
	KL-SHLD-TE

TITLE.	SHLD-TE

REV.	UNIT.	SCALE.	PAGE.	PROJ.
A	mm	-	1/1	