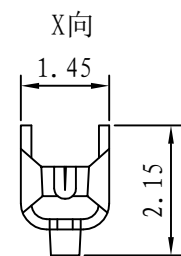
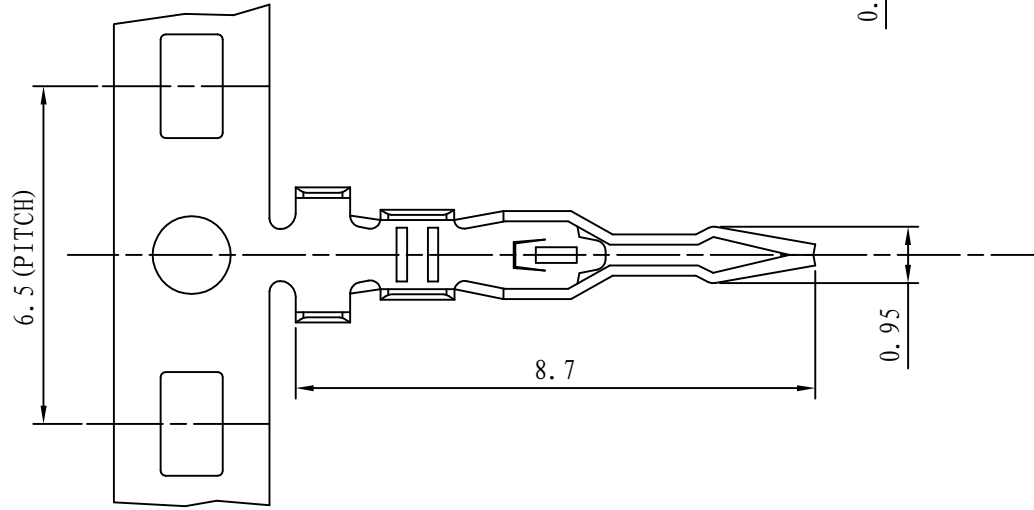
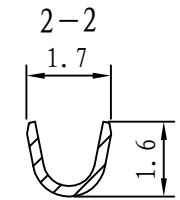
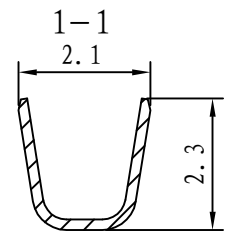
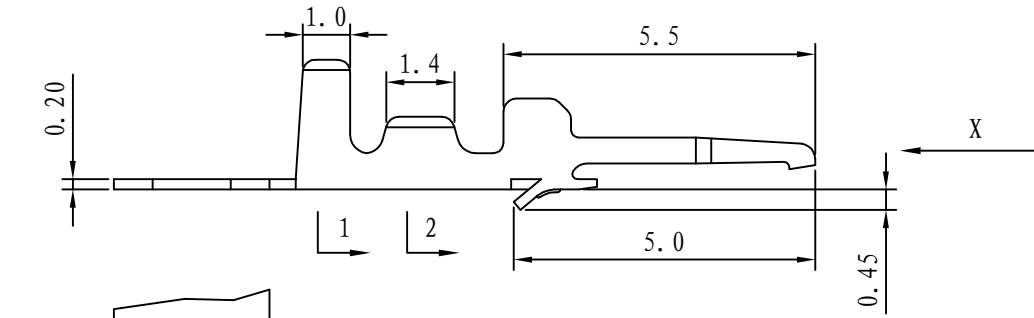


1 2 3 4 5 6 7 8 9

| REV. | ECN NO | DESCRIPTION | REVISED | DATE    |
|------|--------|-------------|---------|---------|
| A    |        | 新订图面        | LXM     | 15.5.25 |



Specifications / 技术规格:

Current Rating: 2A  
 额定电流: 2A  
 Insulation Resistance: 1000 MΩ Min.  
 绝缘电阻: 最小1000MΩ  
 Dielectric Withstanding: 800V AC  
 耐电压: 800V AC  
 Contact Resistance: 20mΩ Max.  
 接触电阻: 最大20mΩ  
 Operating Temperature: -25°C to +85°C  
 工作温度: -25°C 到 85°C  
 Materials / 材料:  
 Contact Material: Phosphor Bronze (Tin plating)  
 接触端子材料: 磷铜 (镀锡)

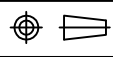
 浙江快利电子有限公司  
 Zhejiang Kuaili Electronic Co., Ltd

| GENERAL TOLERANCE |             |
|-------------------|-------------|
| X* ± 3*           | .*** ± 0.10 |
| .X* ± 2*          | .** ± 0.15  |
| .XX* ± 1*         | . * ± 0.25  |
| .XXX* ± 0.5*      | *. ± 0.35   |

|           |     |       |          |
|-----------|-----|-------|----------|
| DESIGN:   | 李晓明 | DATE: | 15'.5.25 |
| CHECKED:  | 李晓明 | DATE: | 15'.5.25 |
| AUDITED:  | 张宁  | DATE: | 15'.5.26 |
| APPROVED: | 朱建华 | DATE: | 15'.5.27 |

|          |           |
|----------|-----------|
| DWG. NO. | KL-SAN-TE |
| PART NO. |           |

|        |        |
|--------|--------|
| TITLE: | SAN-TE |
|--------|--------|

| REV. | A | UNIT. | MM | SCALE. | ---   |
|------|---|-------|----|--------|---|
|      |   |       |    |        |  |

1 2 3 4 5 6 7 8 9