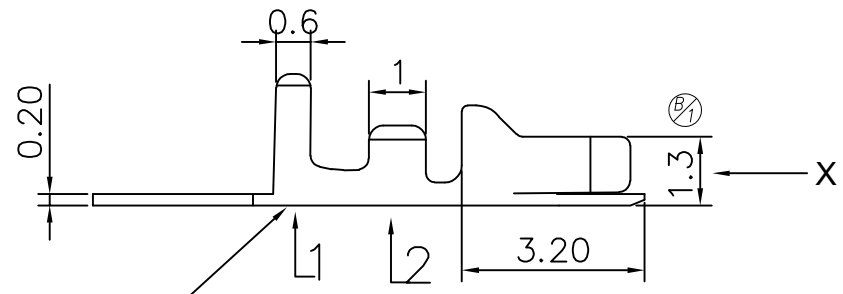
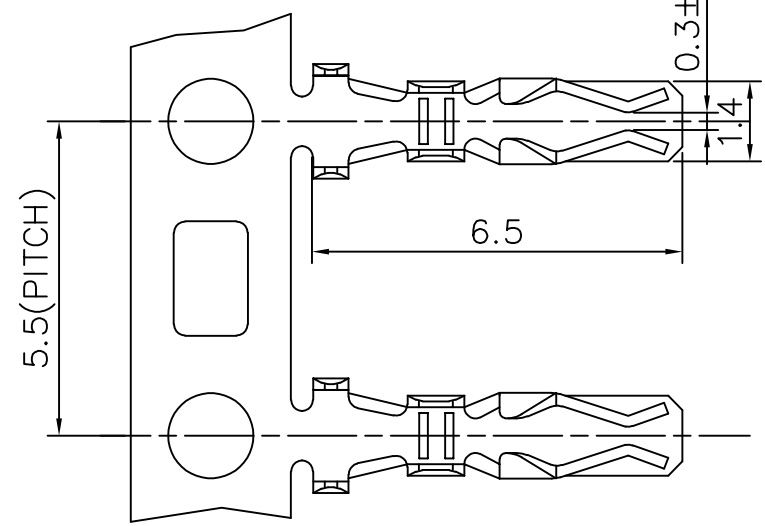
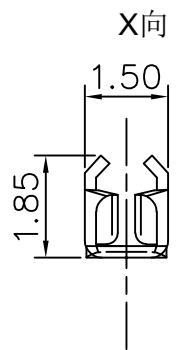
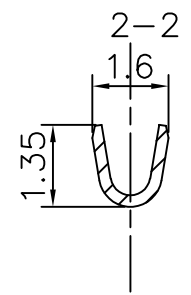
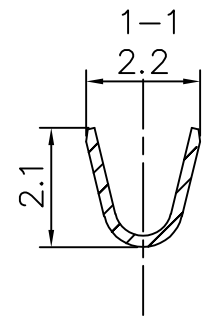


REV.	ECN NO	DESCRIPTION	REVISED	DATE
A		新订图面	LXM	15.2.01
A	20220403014	修改 \textcircled{B}_1 处	HELLER	22.04.03



此处刻公司LOGO (KLDZ或KL), 具体以实物为准。



Specifications / 技术规格:

Current Rating: 2A
 额定电流: 2A
 Insulation Resistance: 1000MΩ Min.
 绝缘电阻: 最小1000MΩ
 Dielectric Withstanding: 800V AC
 耐电压: 800V AC
 Contact Resistance: 20mΩ Max.
 接触电阻: 最大20mΩ
 Operating Temperature: -25°C to +85°C
 工作温度: -25°C 到 85°C

Materials / 材料:

Contact Material: Phosphor Bronze (Tin plating)
 接触端子材料: 磷铜 (镀锡)
 Recommended wire gauge: AWG28#-24#
 推荐线规: AWG28#-24#

浙江快利电子有限公司
 Zhejiang Kuaili Electronic Co., Ltd

GENERAL TOLERANCE	
X* ± 3'	.*** ----
.X* ± 2'	.** ±0.20
.XX* ± 1'	. * ±0.30
.XXX* ± 0.5'	*. ----

DESIGN:	HELLER	DATE:	22'.04.03
CHECKED:	李晓明	DATE:	22'.04.03
AUDITED:	王子林	DATE:	22'.04.03
APPROVED:	朱建华	DATE:	22'.04.03

DWG. NO.	PART NO. KL-PHS-TE-2824
TITLE.	

TITLE.	PHS-TE
--------	--------

REV.	UNIT.	SCALE.	
B	MM	----	