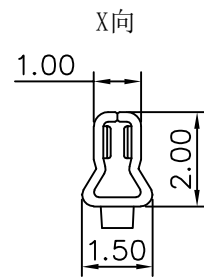
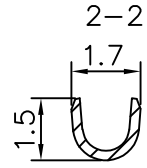
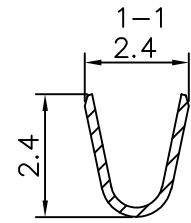
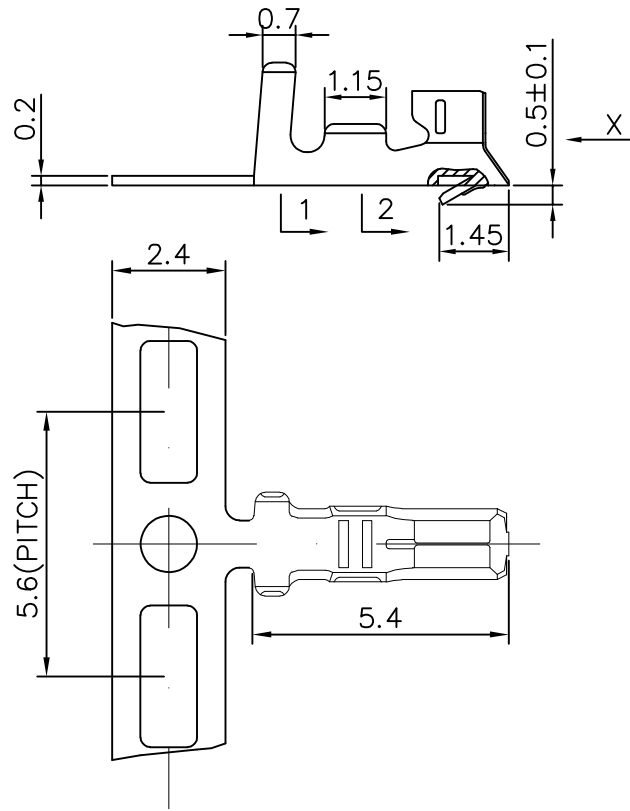


REV.	ECN NO	DESCRIPTION	REVISED	DATE
A		新订图面	KEVIN	2016.4.18



Specifications / 技术规格:

Current Rating: 2A
 额定电流: 2A
 Insulation Resistance: 1000MΩ Min.
 绝缘电阻: 最小1000MΩ
 Dielectric Withstanding: 800V AC
 耐电压: 800V AC
 Contact Resistance: 20mΩ Max.
 接触电阻: 最大20mΩ
 Operating Temperature: -25°C to +85°C
 工作温度: -25°C 到 85°C

Materials / 材料:

Contact Material: Phosphor Bronze(Tin plating)
 接触端子材料: 磷铜(镀锡)

wire gage: 30AWG-24AWG
 线规: 30AWG-24AWG

 浙江快利电子有限公司
 ZheJiang KuaiLi Electronic Co., LTD.

GENERAL TOLERANCE	
X.: ±3°	X.: ±0.35
.X: ±2°	X.X: ±0.25
.XX: ±1°	X.XX: ±0.15
.XXX: ±0.5°	X.XXX: ±0.10

DESIGN: KEVIN
 CHECKED: 李晓明
 APPROVED: 朱建华

DATE: 2016-04-18
 DATE: 2016-04-18
 DATE: 2016-04-18

DWG. NO.
 PART NO.
 KL-PH-TE-3024

TITLE.
 PH-TE (16.5)

REV.	UNIT.	SCALE.	PAGE.	PROJ.
A	mm	-	1/1	