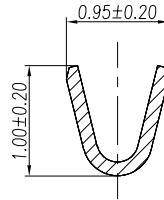
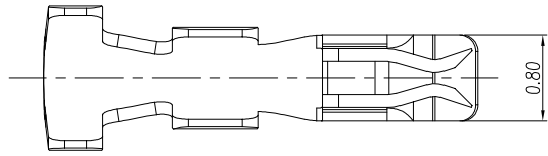
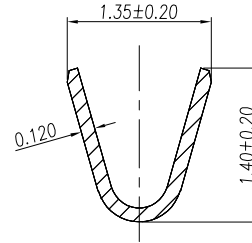


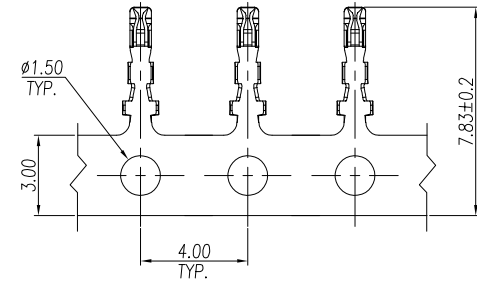
REV.	ECN NO	DESCRIPTION	REVISED	DATE
A		新订图面	KEVIN	2013.4.7
B	20170722001	修改开口头部尺寸	HELLER	2017.7.22



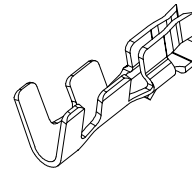
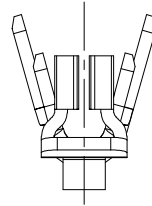
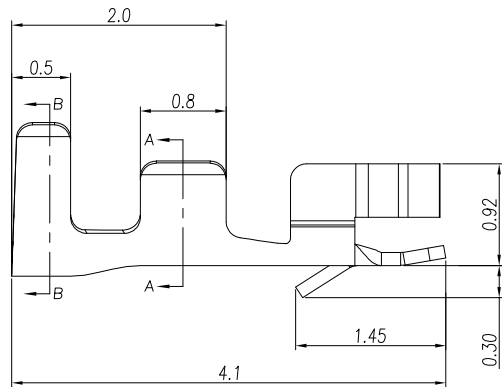
SECT. A-A



SECT. B-B



排样图
SC 0.25:1



Specifications 技术规格:

Current Rating: 1A
额定电流: 1A

Voltage rating: 50V AC, DC
额定电压: 50V AC, DC

Insulation Resistance: 500 MΩ Min.
绝缘电阻: 最小500MΩ

Dielectric Withstanding: 500V AC
耐电压: 500V AC

Contact Resistance: 20mΩ Max.
接触电阻: 最大20mΩ

Operating Temperature: -25° C to +85° C
工作温度: -25° C 到 85° C

Materials 材料:

Contact Material: Phosphor Bronze (Tin plated)
接触端子材料: 磷铜 (镀锡)

Recommended wire gauge: AWG28#-32#
推荐线规: AWG28#-32#

 **浙江快利电子有限公司**
ZheJiang KuaiLi Electronic Co., Ltd.

GENERAL TOLERANCE

X° ± X'	.XXX: ±0.05
.X° ± X.	.XX: ±0.10
.XX° ± 1'	.X: ±0.20
.XXX° ± 0.5'	X.: ±0.30

DESIGN: 瞿益远

DATE: 2017.7.22

CHECKED: 朱建慧

DATE: 2017.7.22

APPROVED: 朱建华

DATE: 2017.7.22

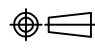
DWG. NO.

PART NO.

KL-NH1.0-TE-3228

TITLE.

NH1.0-TE 端子

REV.	UNIT.	SCALE.	
B	MM	-	