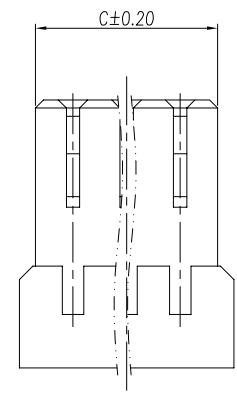
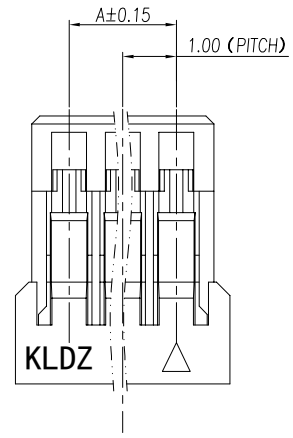
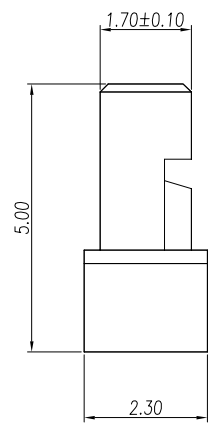
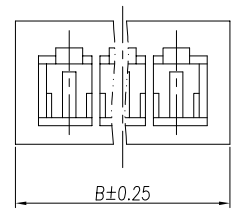
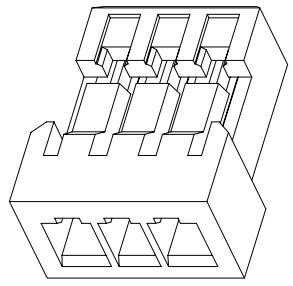


ROHS

REV.	ECN NO	DESCRIPTION	REVISED	DATE
A		新订图面	KEVIN	2013.4.6



PIN	DIM(mm)		
	A	B	C
2	1.00	3.00	2.40
3	2.00	4.00	3.40
4	3.00	5.00	4.40
5	4.00	6.00	5.40
6	5.00	7.00	6.40
7	6.00	8.00	7.40
8	7.00	9.00	8.40
9	8.00	10.00	9.40
10	9.00	11.00	10.40
11	10.00	12.00	11.40
12	11.00	13.00	12.40
13	12.00	14.00	13.40
14	13.00	15.00	14.40
15	14.00	16.00	15.40
16	15.00	17.00	16.40



Specifications:
 Rated Voltage: 50V AC, DC
 Rated Current: 1A
 Contact Resistance: 20mΩ MAX
 Insulation Resistance: 500MΩ MIN
 Withstand Voltage: 500V AC/minute
 Working Temperature: -25℃~85℃
 Materials:
 Housing: PA or PBT UL94V-2

 浙江快利电子有限公司
 ZheJiang KuaiLi Electronic Co., Ltd.

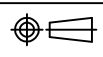
GENERAL TOLERANCE	
X° ± X'	.XXX: ±0.10
.X° ± X.	.XX : ±0.15
.XX° ± 1'	.X : ±0.25
.XXX° ± 0.5'	X. : ±0.35

DESIGN: KEVIN
 CHECKED: 张宁
 APPROVED: 朱建华

DATE: 2013.4.6
 DATE: 2013.4.6
 DATE: 2013.4.6

DWG. NO.
 PART NO.
 KL-NH1.0-NY-01-W

TITLE.
 NH1.0-NY

REV.	UNIT.	SCALE.	
A	MM	-	