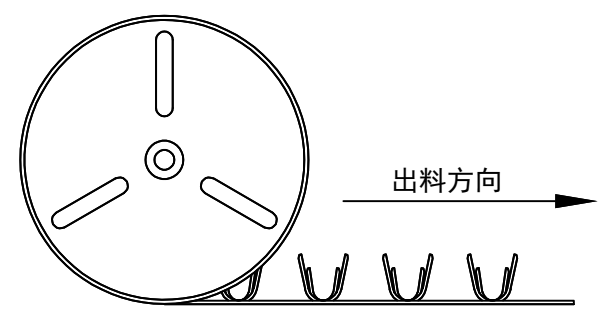
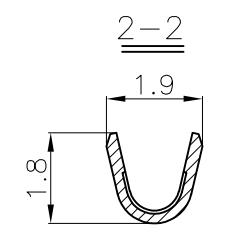
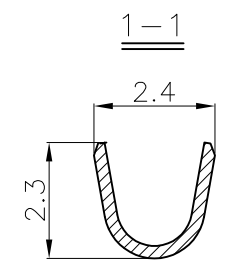
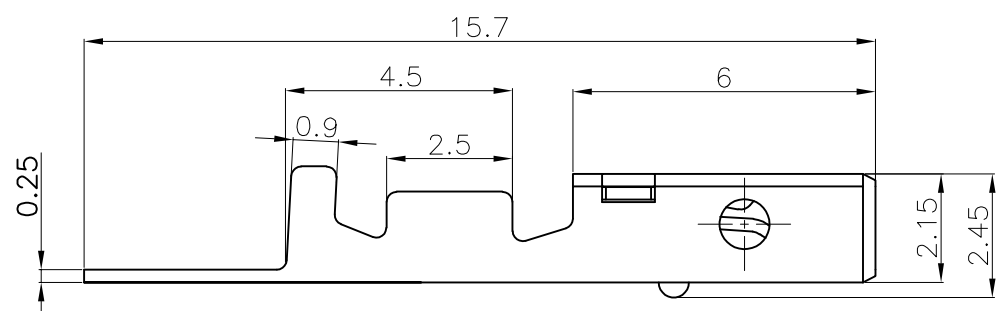
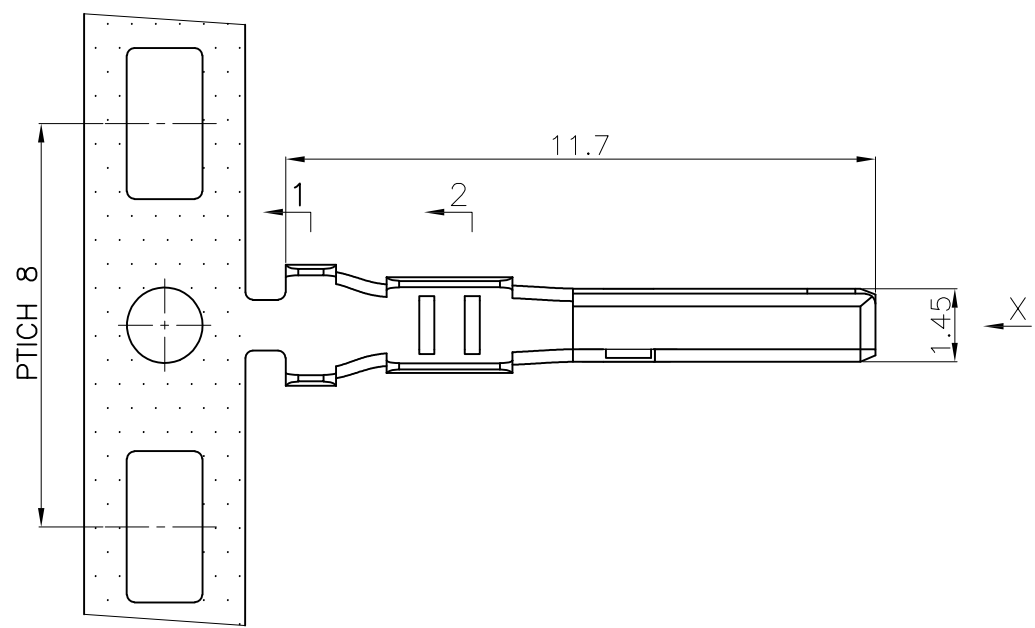


REV.	ECN NO	DESCRIPTION	REVISED	DATE
A		新订图面	LXM	16'.03.09



出料示意图
(料带朝内, 压线脚朝上)



Specifications / 技术规格:

Current Rating: 3A(22AWG)
额定电流: 3A(22AWG)

Insulation Resistance: 1000MΩ Min.
绝缘电阻: 最小1000MΩ

Dielectric Withstanding: 800V AC
耐电压: 800V AC

Contact Resistance: 20mΩ Max.
接触电阻: 最大20mΩ

Operating Temperature: -25°C to +85°C
工作温度: -25°C 到 85°C

Materials / 材料:

Contact Material: Phosphor Bronze(Tin plating)
接触端子材料: 磷铜(镀锡)

Recommended wire gauge: AWG26#-22#
推荐线规: AWG26#-22#

浙江快利电子有限公司
Zhejiang Kuaili Electronic Co., Ltd

REV. A	UNIT. MM	SCALE. ---	
--------	----------	------------	--

GENERAL TOLERANCE	
X.* ± X.*	.*** ±0.10
.X* ± X.	.** ±0.15
.XX* ± XX.	. * ±0.25
.XXX* ± 0.5*	*. ±0.35

DESIGN:	徐民建	DATE:	16'.03.09
CHECKED:	徐民建	DATE:	16'.03.09
AUDITED:	王子林	DATE:	16'.03.09
APPROVED:	朱建华	DATE:	16'.03.09

DWG. NO.	
PART NO.	KL-JWPF-TE

TITLE.	JWPF-TE
--------	---------