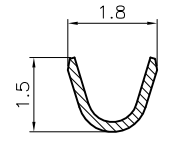
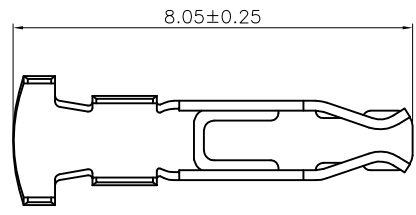
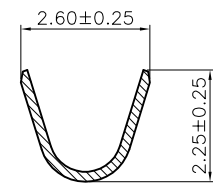


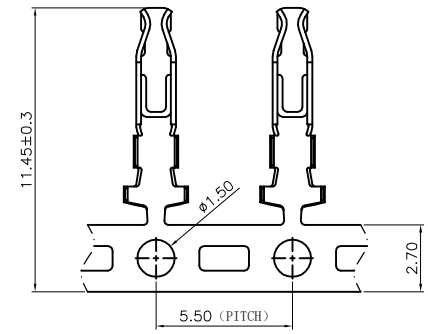
REV.	ECN NO	DESCRIPTION	REVISED	DATE
A		新订图面	HELLER	2019.03.20



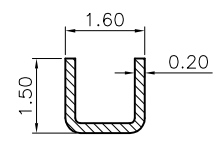
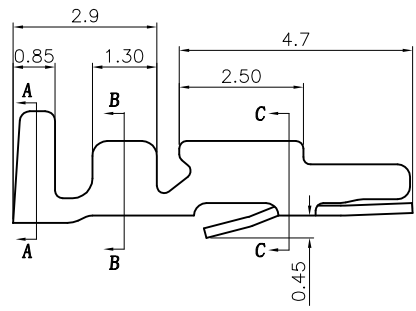
SECT. B-B



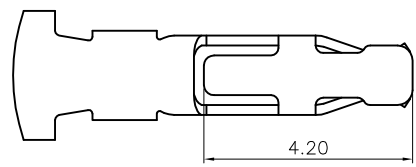
SECT. A-A



排样图  
SCALE 0.5:1



SECT. C-C



Specifications/技术规格:

Current Rating: 3A  
 额定电流: 3A  
 Voltage rating: 250V AC,DC  
 额定电压: 250V AC,DC  
 Insulation Resistance: 1000 MΩ Min.  
 绝缘电阻: 最小1000MΩ  
 Dielectric Withstanding: 1000V AC  
 耐电压: 1000V AC  
 Contact Resistance: 20mΩ Max.  
 接触电阻: 最大20mΩ  
 Operating Temperature: -25°C to +85°C  
 工作温度: -25°C 到 85°C

Materials/材料:

Contact Material: Phosphor Bronze(Tin plated)  
 接触端子材料: 磷铜(镀锡)

浙江快利电子有限公司  
 Zhejiang Kuaili Electronic Co., Ltd

GENERAL TOLERANCE	
X. ± 3'	.XXX: ±0.10
.X ± 2'	.XX: ±0.15
.XX ± 1'	.X: ±0.25
.XXX ± 0.5'	X: ±0.35

DESIGN: HELLER  
 AUDITED: 朱建慧  
 APPROVED: 朱建华

DATE: 19'.03.20  
 DATE: 19'.03.20  
 DATE: 19'.03.20

DWG. NO.  
 PART NO.  
 KL-HXB2.5-TE

TITLE.  
**HXB2.5-TE**

REV.	A	UNIT.	MM	SCALE.	---	