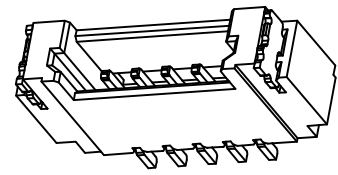
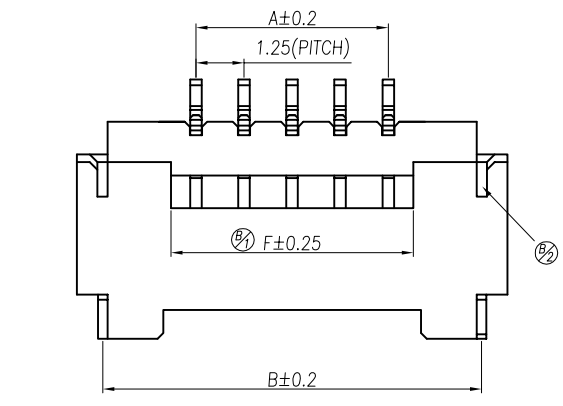
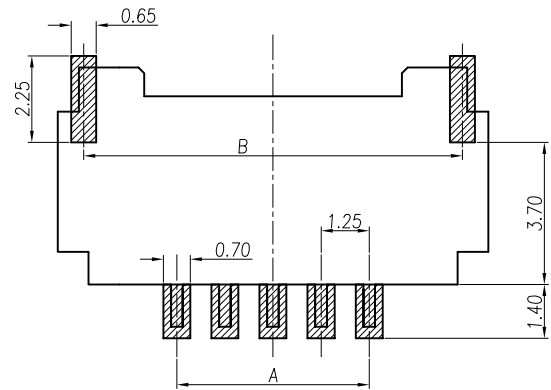
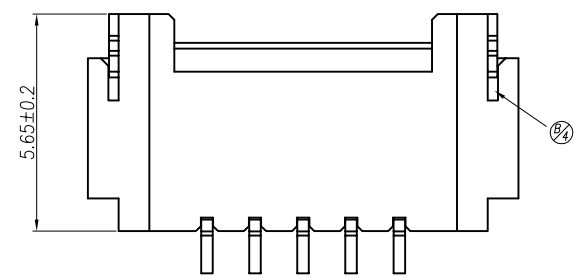
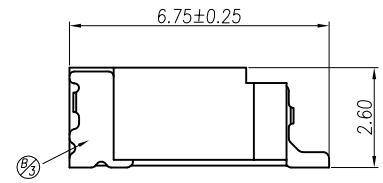
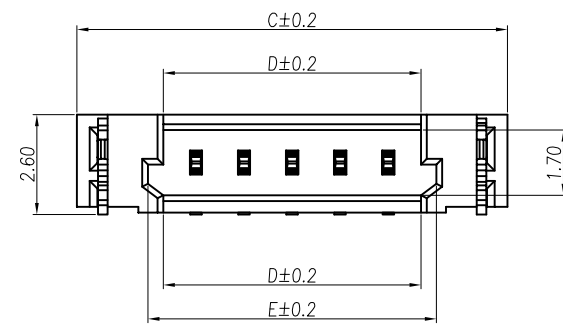


REV.	ECN NO	DESCRIPTION	REVISED	DATE
A		新订图面	HELLER	2016.06.27
B	20170321001	修改②处	HELLER	2017.03.21



PIN 数	DIM					
	A	B	C	D	E	F
2	1.25	6.10	7.45	2.95	3.75	2.55
3	2.50	7.35	8.70	4.20	5.00	3.80
4	3.75	8.60	9.95	5.45	6.25	5.05
5	5.00	9.85	11.20	6.70	7.50	
6	6.25	11.10	12.45	7.95	8.75	
7	7.50	12.35	13.70	9.20	10.00	6.30
8	8.75	13.60	14.95	10.45	11.25	
9	10.00	14.85	16.20	11.70	12.50	
10	11.25	16.10	17.45	12.95	13.75	
11	12.50	17.35	18.70	14.20	15.00	
12	13.75	18.60	19.95	15.45	16.25	
13	15.00	19.85	21.20	16.70	17.50	
14	16.25	21.10	22.45	17.95	18.75	
15	17.50	22.35	23.70	19.20	20.00	
16	18.75	23.60	24.95	20.45	21.25	



Specifications / 技术规格:
Current rating: 1A

Voltage rating: 50V AC, DC
额定电压: 50V AC, DC
Insulation Resistance: 500MΩ Min.
绝缘电阻: 最小500MΩ
Dielectric Withstanding: 500V AC 1Min
耐电压: 500V AC 1分钟
Contact Resistance: 20mΩ Max.
接触电阻: 最大20mΩ
Operating Temperature: -25°C to +85°C
工作温度: -25°C 到 85°C

Materials / 材料:
Contact Material: Phos.bronze (Tin plating)
接触端子材料: 磷铜(镀锡)
Soldering Material: Phos.bronze (Tin plating)
焊脚材料: 磷铜(镀锡)
Insulation Material: LCP or PA UL94V-0
绝缘体塑胶材质: LCP 或 PBT UL94V-0

Recommended P.C.Board Hole Layout

浙江快利电子有限公司
Zhejiang Kuaili Electronic Co., Ltd

GENERAL TOLERANCE	
X.° ± 3'	.XXX ±0.10
.X° ± 2'	.XX ±0.15
.XX° ± 1'	.X ±0.25
.XXX° ± 0.5'	X. ±0.35

DESIGN:	HELLER	DATE:	17'.3.21
CHECKED:	瞿益远	DATE:	17'.3.21
AUDITED:	张宁	DATE:	17'.3.21
APPROVED:	朱建华	DATE:	17'.3.21

DWG. NO.	KL-DF14-NAWT
PART NO.	

TITLE.	DF14-NAWT
--------	-----------

REV.	B	UNIT.	MM	SCALE.	1:1