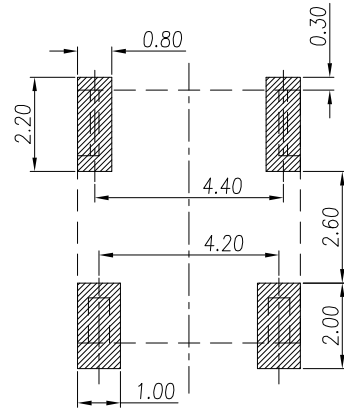
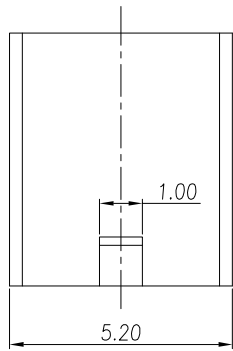
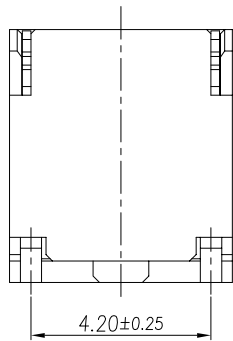
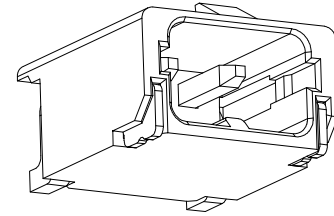
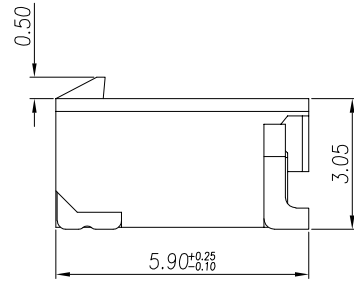
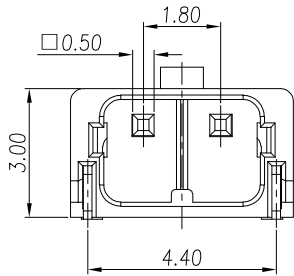


REV.	ECN NO	DESCRIPTION	REVISED	DATE
A		新订图面	HELLER	2016.11.1



RECOMMENDED P.C. BOARD LAYOUT (TOP VIEW)
GENERAL TOLERANCE : ±0.05



规格:

- 材料:
 - 胶芯材料: 热塑性高温塑料 UL, 94V-0 本色.
 - 焊片材料: 铜合金, 镀镍&锡.
 - 插针材料: 铜合金, 镀镍&锡.
- 额定电压: 250V AC.
- 额定电流: 2.0A.
- 接触电阻: 最大20mΩ (试验后量测).
- 绝缘电阻: 1000MΩ.
- 耐压: 800V/1分钟.
- 操作温度: -25° C~85° C.

 浙江快利电子有限公司
ZheJiang KuaiLi Electronic Co., LTD.

GENERAL TOLERANCE

X° ± 3'	X. ±0.35
.X° ± 2'	.X ±0.25
.XX° ± 1'	.XX ±0.15
.XXX° ± 0.5'	.XXX ±0.10

DESIGN: HELLER

DATE: 2016.11.1

DWG. NO.

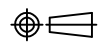
TITLE.

CHECKED:

DATE:

PART NO.

1. 8间距卧贴带挂台
1800-2AWT

REV.	UNIT.	SCALE.	
A	MM	-	

KL-1800-2AWT