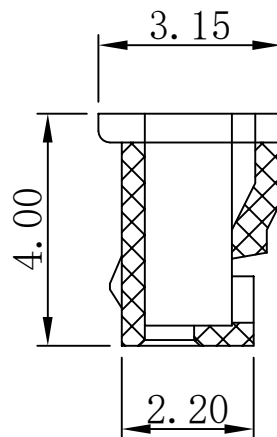
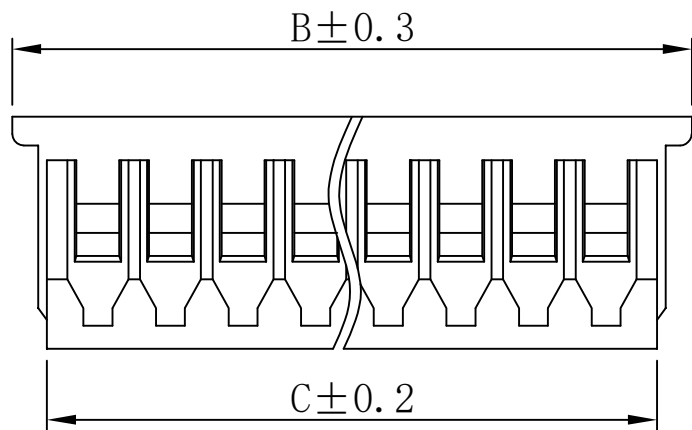
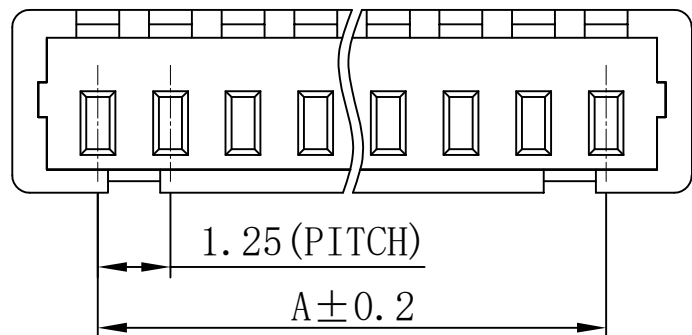


REV.	ECN NO	DESCRIPTION	REVISED	DATE
A		New drawing	KEVIN	



CKT.	A	B	C
2	1.25	4.25	3.00
3	2.50	5.50	4.25
4	3.75	6.75	5.50
5	5.00	8.00	6.75
6	6.25	9.25	8.00
7	7.50	10.50	9.25
8	8.75	11.75	10.50
9	10.00	13.00	11.75
10	11.25	14.25	13.00
11	12.50	15.50	14.25
12	13.75	16.75	15.50
13	15.00	18.00	16.75
14	16.25	19.25	18.00
15	17.50	20.50	19.25
16	18.75	21.75	20.50




Specifications / 技术规格:

Current rating: 1A
 额定电流: 1A
 Voltage rating: 125V AC, DC
 额定电压: 125V AC, DC
 Insulation Resistance: 500MΩ Min.
 绝缘电阻: 最小500MΩ
 Dielectric Withstanding: 500V AC 1min
 耐电压: 500V AC 1分钟
 Contact Resistance: 20mΩ Max.
 接触电阻: 最大20mΩ
 Operating Temperature: -25° C to +85° C
 工作温度: -25° C 到85° C

Materials / 材料:

Insulation Material: PA or PBT UL94V-0 Natural
 绝缘体塑胶材料: PA 或 PBT UL94V-0 本色

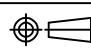
 浙江快利电子有限公司

GENERAL TOLERANCE	
X. ° ± X. °	.XXX: ±0.10
.X° ± X.	.XX : ±0.15
.XX° ± 1°	.X : ±0.25
.XXX° ± 0.5°	X. : ±0.35

DESIGN: KEVIN	DATE: 2015-3-10
CHECKED:	DATE:
APPROVED:	DATE:

DWG. NO.	PART NO. KL-1.25-NY-02-BE
TITLE.	

TITLE.	1.25-NY
--------	---------

REV. A	UNIT. MM	SCALE. -	
--------	----------	----------	---